

Series MAX/RDX

Choice of Round or Square Profile

Low Profile LED Strip

Full body micro-silhouette makes a bold statement with a minimal design in a variety of standard powder coated finish options, as well as custom colors. Scaled to the LED module, the drop frosted diffuser surrounds the LEDs for soft lighting. MAX/RDX fixture can be surface mounted on wall or ceiling or pendant mounted with specially engineering cable mounting kit. MAX/RDX fixtures can be used individually or in a continuous run, either surface, wall, or pendant mounted. Ideal for retail applications.

CONSTRUCTION

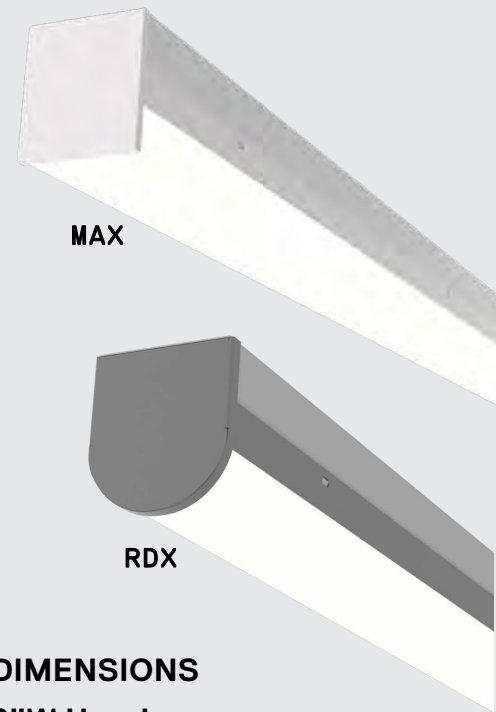
Housing is die-formed and embossed 22 gauge steel, chemically treated to both resist corrosion and also to enhance paint adhesion.

MOUNTING

Pendant mount or surface mount (horizontal or vertical).

TYPICAL OPTIONS & ACCESSORIES

See page 2 for multiple sensor options, finish options and emergency battery backup choices available.



DIMENSIONS

2"W Housing

24"L x 2"W x 2.972"H
36"L x 2"W x 2.972"H
48"L x 2"W x 2.972"H
96"L x 2"W x 2.972"H

3"W Housing

24"L x 3"W x 3.375"H
36"L x 3"W x 3.375"H
48"L x 3"W x 3.375"H
96"L x 3"W x 3.375"H

FEATURES & BENEFITS

- For individual use or in continuous runs through use of joining brackets
- Variety of lumen packages/wattages through use of programmable drivers
- Multiple color temperatures available (3000K, 3500K, 4000K and 5000K)
- Available with smooth frosted lens
- Multiple powder coat finish colors available
- Suitable for dry and damp locations
- Emergency battery backup available
- >50,000 hrs of L70 LED life
- CRI >80
- 0-10 Volts dimmable 120-277V
- Power factor > 0.90
- 5 year warranty



ORDER INFORMATION

Factory at your fingertips. Fill in the blanks to create your part number or create a custom configuration.

| | | | | W | | L | | | | | | |
|------------------------------|--------|------------------------------|------------------------|-----------------|-----|-------------------------------|------------|-----------------------|-----|-----------------------------|-------|-------|
| SENSOR ¹ | SERIES | LENS | | LENGTH | | WATTAGE & LUMENS ² | | DRIVER | | CCT ³ | | |
| SD Daylight Harvesting | MAX2 | 2" Wide Square Housing | FR | Frosted Lens | 24L | 24" | Q14W1700L | 14 Watts 1700 Lumens | DMV | 122-277VAC 0-10V Dimming | 30K | 3000K |
| | | | | | | | Q22W2600L | 22Watts 2600 Lumens | | | 35K | 3500K |
| | | | | | 36L | 36" | Q21W2550L | 21 Watts 2550 Lumens | | | 40K | 4000K |
| | RDX2 | 2" Wide Round Housing | FR | Frosted Lens | | | Q33W3900L | 33 Watts 3900 Lumens | | | 50K | 5000K |
| | | | | | 48L | 48" | Q28W3400L | 28 Watts 3400 Lumens | | | 80CRI | 80CRI |
| | | | | | 72L | 72" | Q44W5200L | 44 Watts 5200 Lumens | | | 80CRI | 80CRI |
| SS On/Off Sensor | MAX3 | 3" Wide Square Housing | FR | Frosted Lens | | | Q42W5100L | 42 Watts 5100 Lumens | | | | |
| | | | | | | | Q66W7800L | 66 Watts 7800 Lumens | | | | |
| | | | | | 96L | 96" | Q56W6800L | 56Watts 6800 Lumens | | | | |
| | RDX3 | 3" Wide Round Housing | FR | Frosted Lens | | | Q88W10400L | 88 Watts 10400 Lumens | | | | |
| | | | | | 24L | 24" | Q20W2500L | 20 Watts 2500 Lumens | | | | |
| | | | | | | | B41W5000L | 41 Watts 5000 Lumens | | | | |
| | | | | | 36L | 36" | Q28W3000L | 28 Watts 3000 Lumens | | | | |
| | | | | | | | Q41W5000L | 41 Watts 5000 Lumens | | | | |
| | | | | | 48L | 48" | B82W10000L | 82 Watts 10000 Lumens | | | | |
| | | | | | 72L | 72" | Q56W6000L | 56 Watts 6000 Lumens | | | | |
| | | B123W15000L | 123 Watts 15000 Lumens | | | | | | | | | |
| | | Q82W10000L | 82 Watts 10000 Lumens | | | | | | | | | |
| | | B164W20000 | 164 Watts 20000 Lumens | | | | | | | | | |

| FINISH ⁴ | | CONFIGURATION | | FLAIR ⁵ | | EMERGENCY OPTIONS | | OPTIONS/ACCESSORIES | |
|---------------------|--------|---------------|--------------|--------------------|----------------|-------------------|--|---------------------|--|
| WH | White | Blank | Individual | RD | Red | EM14 | 14W Emergency backup (integrated in MAX3 4ft and longer) | GT310 | Cable kit with (2) 10' aircraft cable |
| BK | Black | -B | Beginner run | BL | Blue | | | GT315 | Cable kit with (2) 15' aircraft cable |
| SI | Silver | -E | Ender run | BK | Matte Black | | | C15WH | 15' 3 wires 18-gauge power cord |
| | | -J | Joiner | | | | | C515WH | 15' 5 wires 18-gauge power cord |
| | | | | | | | | HC4015WWH | 4ft White Canopy Kit with 5 Wire Cord |
| | | | | | | | | HC4016WWH | 4ft White Canopy Kit with 6 Wire Cord |
| | | | | | | | | HC4025WWH | 12ft White Canopy Kit with 5 Wire Cord |
| | | | | | | | | HC4026WWH | 12ft White Canopy Kit with 6 Wire Cord |

Note:

- Sensors are not integrated and add approx. 3 inches to overall fixture length. Adding a sensor to an existing fixture requires rewiring.
- Minimum fixture wattage of 10W. Minimum 5W per fixture foot, maximum 20.5W per fixture foot. Programmable LED drivers allow custom configured wattages and corresponding lumens. Power feed cable is 18 AWG, a power drop will be required every 48 feet of fixture length OR every 800W, whichever comes first.
- Consult factory for 90CRI and 5000K availability.
- Finish refers to the color of the driver cover portion of the fixture body.
- Flair refers to the end caps and middle stripe of the fixture body. Choose a standard flair color for your fixture from the guide on the following page.

We reserve the right to change design, materials, LEDs and finish in any way that will not alter installed appearance or reduce function and performance.

STANDARD FLAIR COLORS AND FINISHES



Gloss Black
(GB)



Matte Black
(BK)



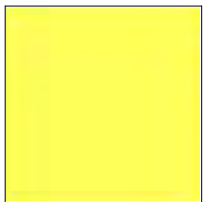
Matte Silver
(SL)



Statuary Bronze
(BZ)



Glimmer (Iron)
(IR)



Safety Yellow
(YL)



Safety Orange
(OR)



Red
(RD)



Fire Engine Red
(FR)

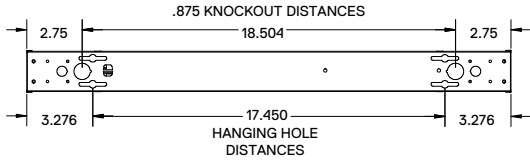


Blue
(BL)

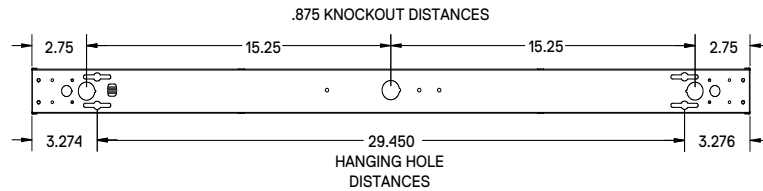
NOTE: Factory offers any Tiger Drylac RAL finish, contact Saylite for more information. Consult factory to special order custom 'real wood' finishes.

DRAWINGS & IMAGES

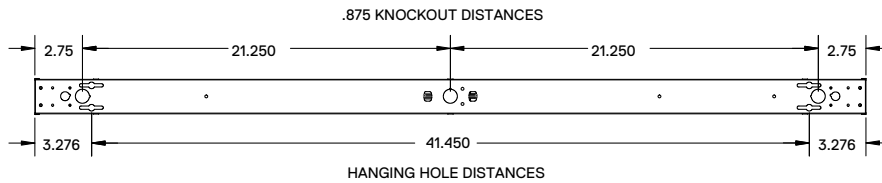
MAX2FR24L / RDX2FR24L



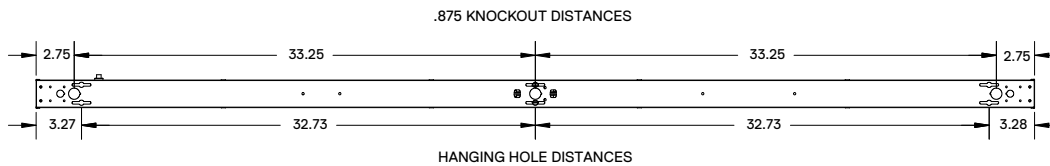
MAX2FR36L / RDX2FR36L



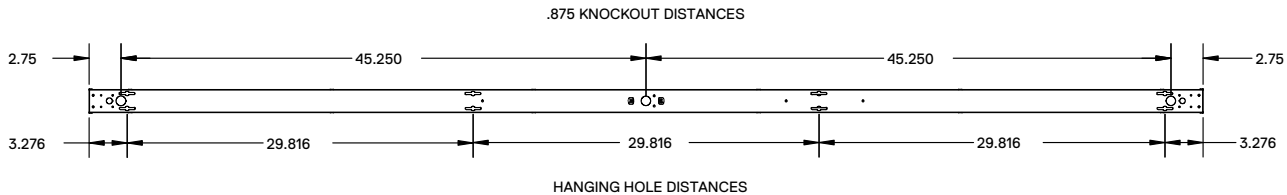
MAX2FR48L / RDX2FR48L



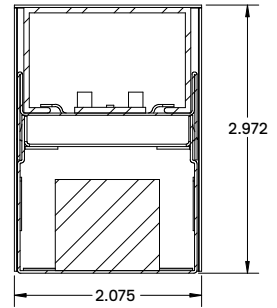
MAX2FR72L / RDX2FR72L



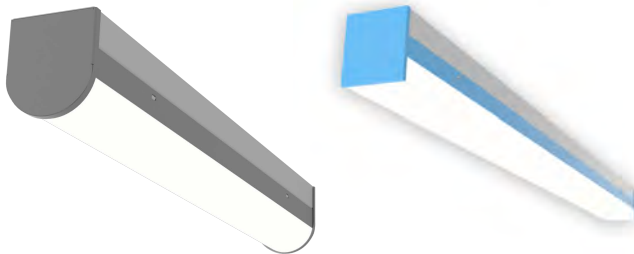
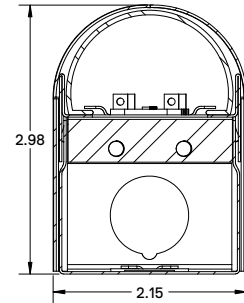
MAX2FR96L / RDX2FR96L



Square Lens Profile



Round Lens Profile



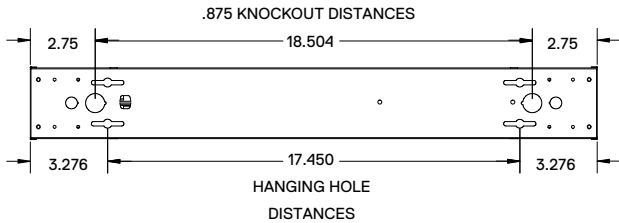
Consult factory for different finish

Replacement Lens Ordering Information

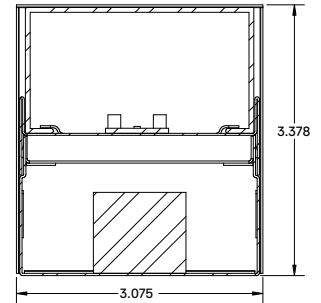
| SERIES | DESCRIPTIONS |
|------------|---|
| OMAX2FR24L | Replacement frosted lens for 24"L x 2.075"W |
| OMAX2FR48L | Replacement frosted lens for 48"L x 2.075"W |
| OMAX2FR96L | Replacement frosted lens for 96"L x 2.075"W |
| OMAX3FR24L | Replacement frosted lens for 24"L x 3.075"W |
| OMAX3FR48L | Replacement frosted lens for 48"L x 3.075"W |
| OMAX3FR96L | Replacement frosted lens for 96"L x 3.075"W |

DRAWINGS & IMAGES

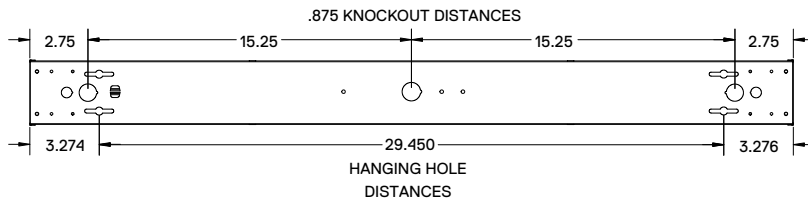
MAX3FR24L / RDX3FR24L



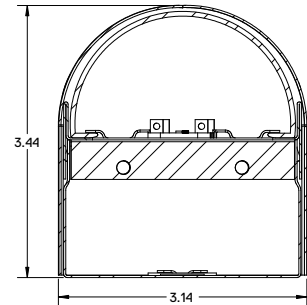
Square Lens Profile



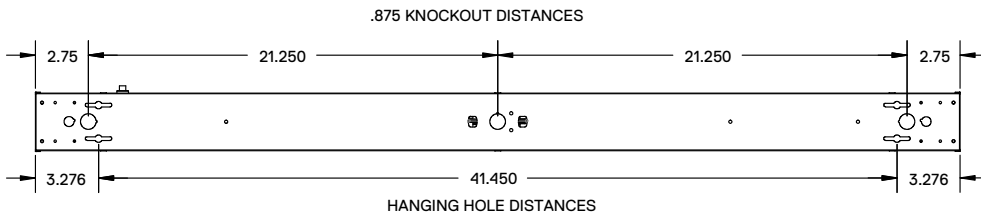
MAX3FR36L / RDX3FR36L



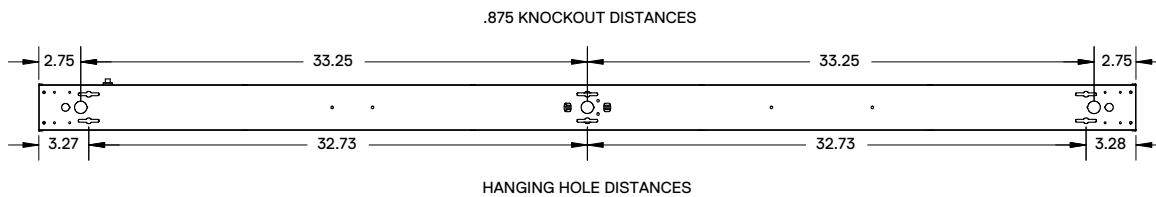
Round Lens Profile



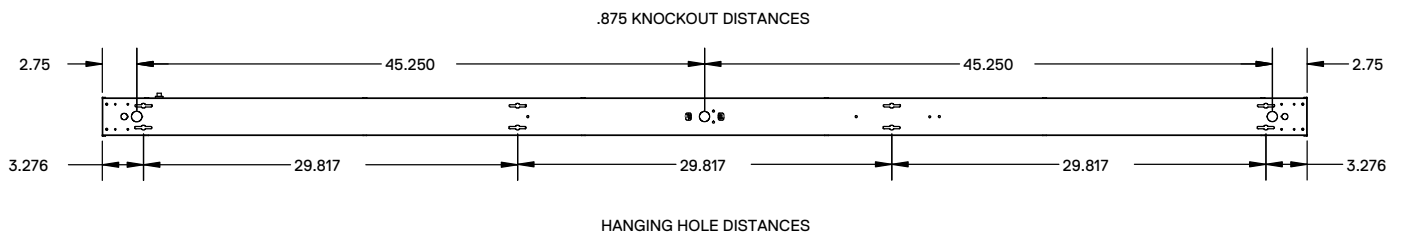
MAX3FR48L / RDX3FR48L



MAX3FR72L / RDX3FR72L



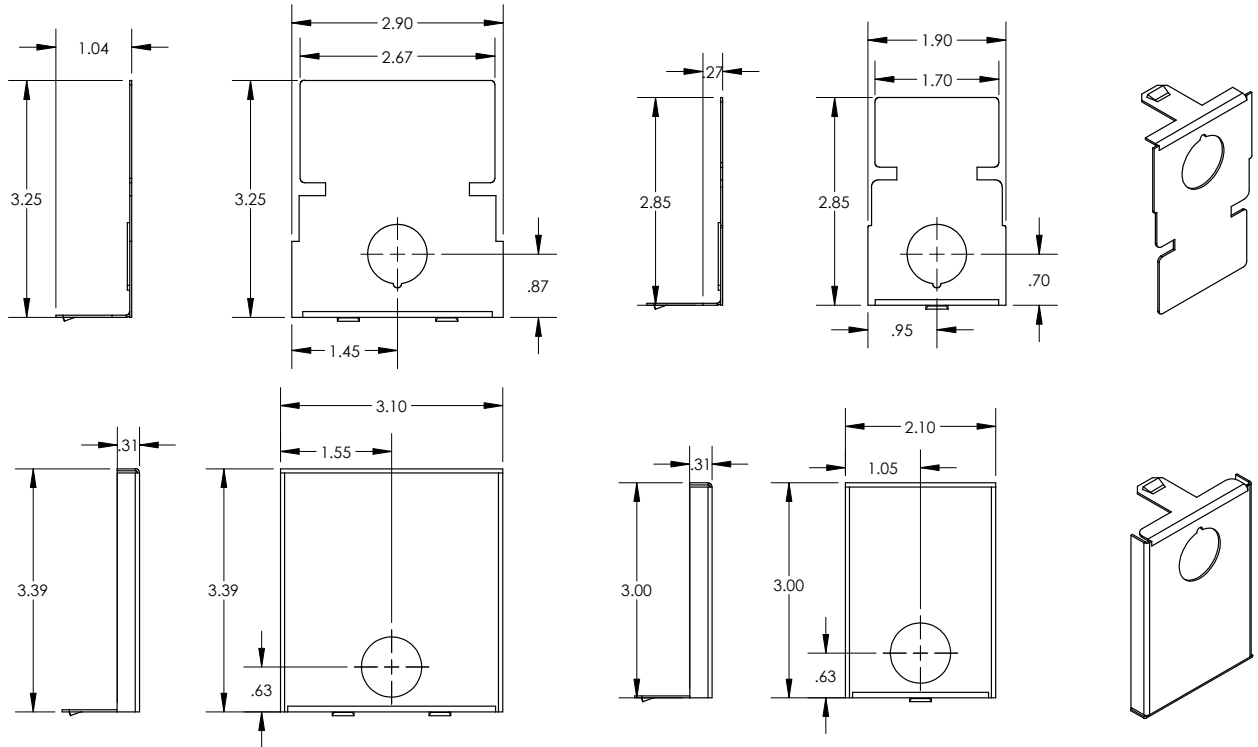
MAX3FR96L / RDX3FR96L



DRAWINGS & IMAGES

Endcaps

MAX Endcaps



RDX Endcaps

