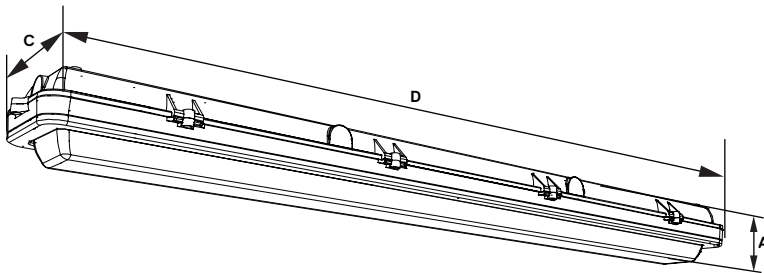




BIS4AQ

Bismarck Hazardous Location LED 48" Linear LED Die Cast



Dimensions

Width (D)	49" (1,247mm)
Length (C)	7" (178mm)
Height (A)	4" (102mm)

Order Information Example:

BIS4AOQF136U5KCP

BIS4AOQ	F					P
Model	Optics	Wattage	Driver	CCT	Lens	Color
BIS4AOQ=LED Open Frame 48" Linear LED Die Cast	F=Wide	112=112w 136=136w	U=120-277V H=347-480V	4K=4000K 5K=5000K	C=Clear UV-Stabilized Polycarbonate Vandal-Resistant Lens L=Opal UV-Stabilized Polycarbonate Vandal-Resistant Lens	P=Platinum

The SaySpec Bismarck BIS4A Class 1, Division 2 Explosion Proof Hazardous Location series wall and ceiling mount luminaire is available with clear or opal lenses and open door frame designed to replace HID lighting systems up to 400w MH or HPS. Typical lighting applications include industrial facilities, oil, gas, painting facilities, and auto service facilities. Mounting heights of 18 to 30 feet can be used based on light level and uniformity requirements.

SPECIFICATIONS AND FEATURES:

HOUSING:

Heavy-Duty Die Cast Aluminum Housing and Top Frame, with 1/2" Tapped Coin Plug Openings for Wiring Entrance Conduits.

LISTING & RATINGS:

ETL Listed for Hazardous Locations Per UL844 as Follows:
Class 1, Division 2 Groups A, B, C, D; T4 Temperature Rating
Suitable for Wet Locations, IP66 Sealed LED Compartment

FINISH:

Powdercoat Finish Over a Chromate Conversion Coating.

LENS:

Clear UV-Stabilized Polycarbonate or Opal UV-Stabilized Polycarbonate Vandal-Resistant Lens

MOUNTING OPTIONS:

Mount with Stainless Steel Adjustable Bracket or Yoke. Rated for 6 #12 AWG 90°C for Through Wiring.

LED:

Aluminum Boards; 165,000 Hours of L70 LED Life (25°C)

WATTAGE:

112w: Array: 112w, System: 126w; (250w HID Equivalent)
136w: Array: 136w, System: 152w; (400w HID Equivalent)

DRIVER:

Electronic Driver, 120-277V, 50/60Hz or 347-480V, 50/60Hz; Less Than 20% THD and PF>0.90. Standard Internal Surge Protection 6kV. 0-10V Dimming Standard for a Dimming Range of 100% to 10%; Dimming Source Current is 150 Microamps.

WARRANTY:

5-Year Warranty for -25°C to +40°C Environment.

See Page 2 for Projected Lumen Maintenance Table.

Project Information:

PROJECT NAME: _____ FIXTURE TYPE: _____

COMPLETE CATALOG#: _____ DATE: _____

COMMENTS: _____

Certification & Listings:



Class 1, Division 2
Groups A, B, C, D
T4 Temperature Rating

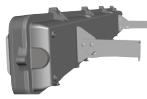




BIS4AQ

Bismarck Hazardous Location LED 48" Linear LED Die Cast

ACCESSORIES & REPLACEMENT PARTS:



BIS2ABRSS*



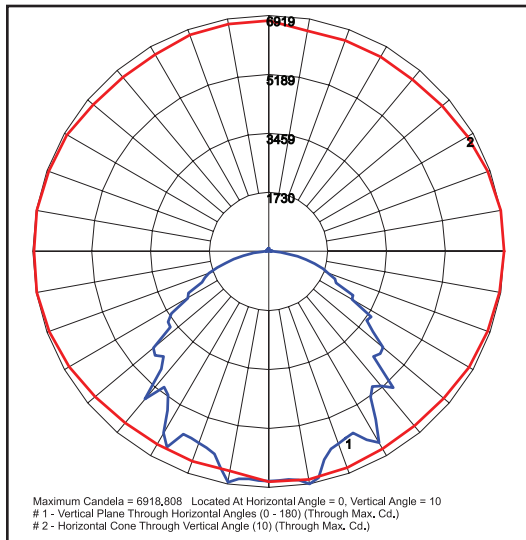
BIS2AYSS*

*Shown Mounted

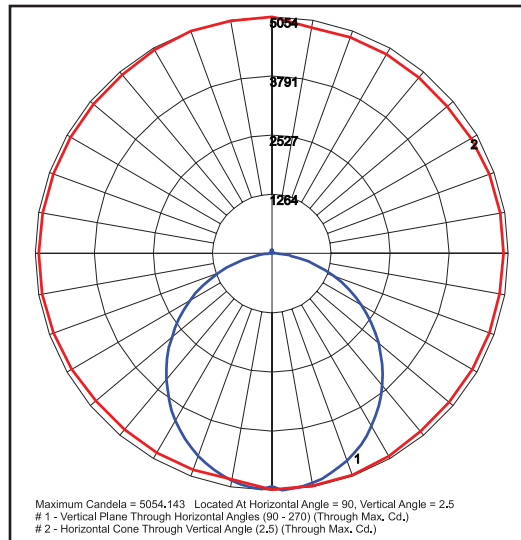
Mounting Accessories (Order Separately, Field Installed)

BIS2ABRSS	Stainless Steel Adjustable Bracket, Set of Two
BIS2AYSS	Stainless Steel Yokes for BIS4A, Includes Hardware.

PHOTOMETRIC DATA



BIS4AQGF136U5KC
Clear Lens



BIS4AQGF136U5KL
Opal Lens

PHOTOMETRIC PERFORMANCE

LED Board Watts	Drive Current (mA)	Input Watts	Optics	Spacing Criteria	5000 CCT 80 CRI		4000 CCT 80 CRI	
					Lumens	LPW	Lumens	LPW
LED 112w (Clear Lens)	116	126	Open Frame (110° x 110°)	1.32	16,287	129	15,636	124
LED 112w (Opal Lens)			Open Frame (110° x 120°)	1.28	13,720	109	13,172	105
LED 136w (Clear Lens)		152	Open Frame (110° x 110°)	1.32	19,773	130	18,982	125
LED 136w (Opal Lens)			Open Frame (110° x 120°)	1.26	16,594	109	15,930	105

PROJECTED LUMEN MAINTENANCE

Data shown for 5000 CCT			Compare to MH			
TM-21-11	Input Watts	Initial	25,000 Hrs	50,000 Hrs	100,000 Hrs	Calculated LED Life
L70 Lumen Maintenance @ 25°C / 77°F	All wattages up to and including 152w	1.00	0.95	0.91	0.82	165,000
L80 Lumen Maintenance @ 40°C / 104°F		1.00	0.93	0.86	0.73	74,000

NOTES:

- Projected per IESNA TM-21-11. Data references the extrapolated performance projections for the 116mA base model in a 25°C ambient, based on 10,000 hours of LED testing per IESNA LM-80-08.
- Compare to MH box indicates suggested Light Loss Factor (LLF) to be used when comparing to Metal Halide (MH) systems.