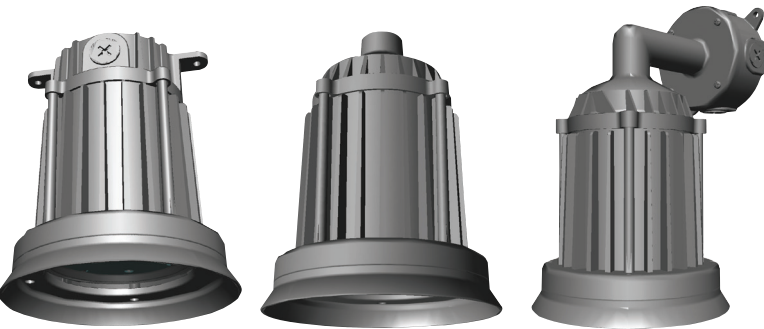




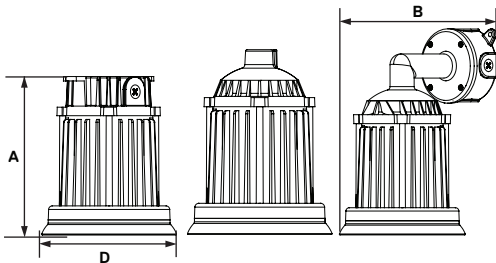
Jackson LED Vaporproof



JACB53Q

JACP53Q

JACW53Q



Dimensions

Diameter (D)	7 1/4" (184mm)
Height (A)	JACP53Q: 9 1/4" (235mm) JACB53Q: 8 1/2" (216mm) JACW53Q: 12" (305mm)
Depth (B)	8 5/8" (225mm)

Order Information Example:

JACP53F1X23U5KPSF

	F	1X23	U			
Model	Optics	Wattage	Driver	CCT	Color	Options
JACB53Q=Jackson LED Box Mount Vaporproof JACP53Q=Jackson LED Pendant Mount Vaporproof JACW53Q=Jackson LED Wall Mount Vaporproof	F=Type V	1X23=23w	U=120-277V	4K=4000K 5K=5000K	P=Platinum C=Custom (Consult Factory)	SF=Single Fuse (120-277V Only) DF=Double Fuse (120-277V Only)

The SaySpec Jackson LED Vaporproof fixtures with a choice of mounting configurations are designed to replace HID lighting systems up to 175w MH or HPS. This vapor resistant fixture can withstand extreme physical and environmental abuse and is ideal for retail centers, industrial parks, schools and universities, public transit and airports, office buildings and medical facilities. Mounting heights of 8 to 14 feet can be used based on light level and uniformity requirements.

SPECIFICATIONS AND FEATURES:

HOUSING:

Heavy Duty Die Cast Aluminum Housing with Integral Heat Sinking, 3/4" NPS Threaded Mounts.

LISTING & RATINGS:

CSA: Listed for Wet Locations, ANSI/UL 1598, 8750
IP66 Sealed LED Compartment

FINISH:

Smooth Powdercoat Finish Over a Chromate Conversion Coating. Custom Colors Available Upon Request.

LENS:

Flat Clear Tempered Glass Lens

MOUNTING OPTIONS:

Pendant Mount or Surface Mount on Wall or Ceiling

LED:

Aluminum Boards; 187,000 Hours of L70 LED Life (25 °C)

WATTAGE:

Array: 22w, System: 27w; (175w HID Equivalent)

DRIVER:

Electronic Driver, 120-277V, 50/60Hz; Less Than 20% THD and PF>0.90. Standard Internal Surge Protection 2kV. 0-10V Dimming Standard for a Dimming Range of 100% to 10%; Dimming Source Current is 150 Microamps.

WARRANTY:

5-Year Warranty for -40°C to +50°C Environment.

See Page 2 for Projected Lumen Maintenance Table.

Project Information:

PROJECT NAME: _____ FIXTURE TYPE: _____

COMPLETE CATALOG#: _____ DATE: _____

COMMENTS: _____

Certification & Listings:





BY SAYLITE

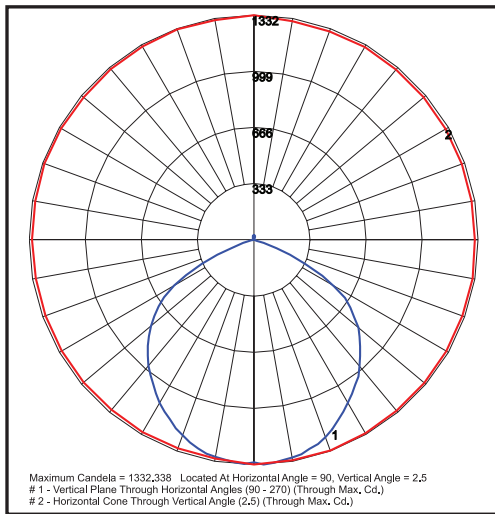
Jackson LED Vaporproof

ACCESSORIES & REPLACEMENT PARTS:

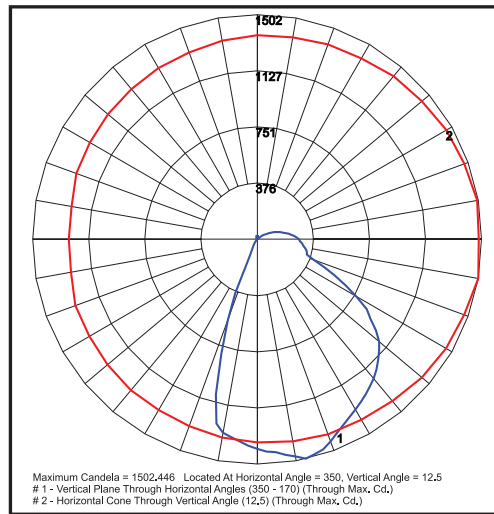


*Shown Mounted

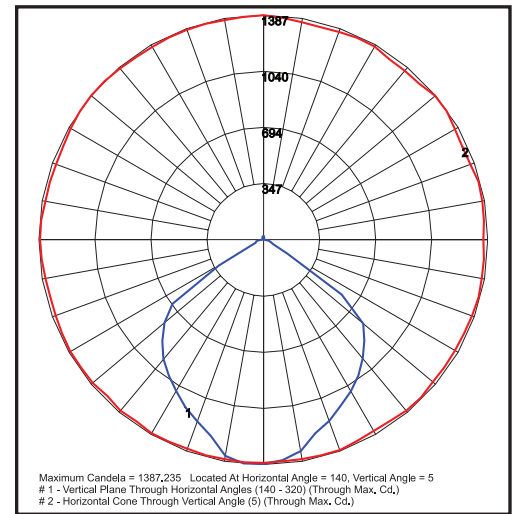
PHOTOMETRIC DATA



JACP53F1X23U5K
Type V



JACP53F1X23U5K
Type V Angled Shade



JACP53F1X23U5K
Type V Straight Shade

PHOTOMETRIC PERFORMANCE

LED Board Watts	Drive Current (mA)	Input Watts	Optics	5000 CCT 80CRI					4000 CCT 80CRI				
				Lumens	LPW	B	U	G	Lumens	LPW	B	U	G
LED 23w	116	27	(No Shade) Type V	3,385	125	2	2	0	3,097	115	1	2	0
LED 23w	116	27	(Angled Shade) Type V	2,741	102	1	3	2	2,508	93	1	3	1
LED 23w	116	27	(Straight Shade) Type V	3,031	112	2	2	1	2,774	103	1	2	1

PROJECTED LUMEN MAINTENANCE

Data shown for 5000 CCT				Compare to MH			
TM-21-11	Input Watts	Initial	25,000 Hrs	50,000 Hrs	100,000 Hrs	Calculated L70@ 25°C	
L70 Lumen Maintenance @ 25°C / 77°F	27	1.00	0.96	0.92	0.84	187,000	
TM-21-11	Input Watts	Initial	25,000 Hrs	50,000 Hrs	100,000 Hrs	Calculated L70@ 50°C	
L70 Lumen Maintenance @ 50°C / 122°F	27	1.00	0.93	0.86	0.72	107,000	
TM-21-11	Input Watts	Initial	25,000 Hrs	50,000 Hrs	100,000 Hrs	Calculated L80@ 40°C	
L80 Lumen Maintenance @ 40°C / 104°F	27	1.00	0.94	0.88	0.76	82,000	

NOTES:

- Projected per IESNA TM-21-11. Data references the extrapolated performance projections for the 116mA base model in a 25°C ambient, based on 10,000 hours of LED testing per IESNA LM-80-08.
- Compare to MH box indicates suggested Light Loss Factor (LLF) to be used when comparing to Metal Halide (MH) systems.