



JOB NAME:

CAT#:

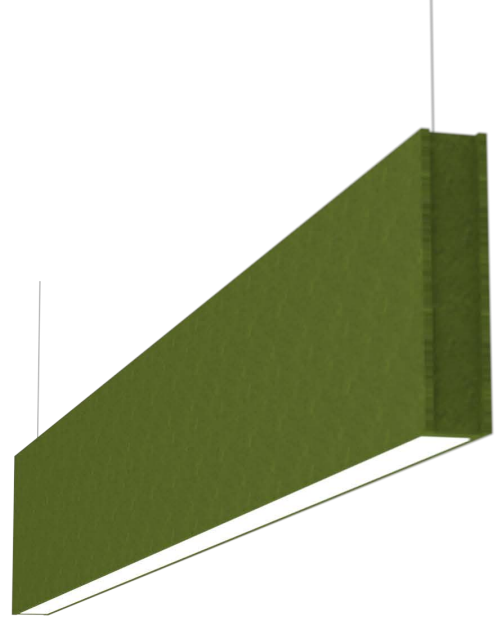
TYPE:

APPLICATIONS

Introducing a new eye catching high efficiency LED light fixture with a narrow acoustic baffle made of sound absorbing material. Class A fire rating option available. It integrates lighting and an acoustic solution into one customizable product. The acoustic material helps create a beautiful and highly functional acoustic baffled ceiling installation. It can be combined with unlit baffles or it can be used as a stand-alone acoustic fixture. Offering multiple colors for different applications or mixing colors to create a dynamic look. Pair LED light fixture with acoustic baffles in the same or complimentary colors. Available in 1ft increments up to 8ft in length and various heights from 12" to 24". The LED light fixture slightly regressed into the acoustic housing for great lighting effect. Consult for noise reduction coefficient (NRC). For more lighting information please see the L23 series

FEATURES & BENEFITS

- 30+ acoustic material colors available
- Pendant mount accommodates most ceiling types
- CRI >80 (90 CRI available)
- >50,000 hrs of L70 LED life
- 0/10 Volt dimmable 120-277V
- Power factor >0.90
- 5 year warranty



Dimensions and specifications subject to change without notice.





JOB NAME:

CAT#:

TYPE:

ORDERING

EXAMPLE: ABL3 24 16 LED U 23 DMV A52 W 30 EM -B

| ABL3 | | LED | | | | | | | | |
|-------------|---------------|---------------|-------------|-----------------------|------------------|----------------------------------|--|-----------------------|--|--|
| 1. SERIES | 2. LENGTH | 3. HEIGHT | 4. GEAR | 5. DISTRIBUTION | | 6. WATTAGE/LUMENS | | 7. DRIVER | | |
| ABL3 | 24 24" | 12 12" | LED | Blank | Downlight (std.) | Downlight or Uplight Only | | DMV | 120-277V Multivolt 0-10V Dimmable | |
| | 48 48" | 16 16" | | | | 24 in. | A44 Ivory A19 Denim A11 Steel | | | |
| | 72 72" | 24 24" | | | | 12 12 Watts 1320 Lumens | | | | |
| | 96 96" | | | | | 24 24 Watts 2640 Lumens | | | | |
| | | 48 in. | | | | | | | | |
| | | | 1U2D | Uplight and Downlight | 24 | 24 Watts 2640 Lumens | 72 in. | D120 | Triac Dimming 120VAC | |
| | | | U | Uplight | 24 | 24 Watts 2640 Lumens | 48 in. | | | |
| | | | | | 48 | 48 Watts 5280 Lumens | 72 in. | | | |
| | | | | | 36 | 36 Watts 3960 Lumens | 96 in. | | | |
| | | | | | 72 | 72 Watts 7920 Lumens | 96 in. | | | |
| | | | | | | | 52 | 52 Watts 5720 Lumens | | |
| | | | | | | | 96 | 96 Watts 10560 Lumens | | |
| | | | | | | | 1 Up and 2 Down Only | | | |
| | | | | | | | 24 in. | | | |
| | | | | | | | 18 | 18 Watts 660U-1320D | | |
| | | | | | | | 27 | 27 Watts 990U-1980D | | |
| | | | | | | | 48 in. | | | |
| | | | | | | | 36 | 36 Watts 1320U-2640D | | |
| | | | | | | | 54 | 54 Watts 1980U-3960D | | |
| | | | | | | | 72 in. | | | |
| | | | | | | | 54 | 54 Watts 1980U-3960D | | |
| | | | | | | | 81 | 81 Watts 2970U-5940D | | |
| | | | | | | | 96 in. | | | |
| | | | | | | | 72 | 72 Watts 2640U-5280D | | |
| | | | | | | | 108 | 108 Watts 3960U-7920D | | |

| 9. FLAIR B ² | | 10. CRI | | 11. COLOR TEMP | | 12. EM (O) ⁵ | | 13. HANGING KIT (O) ⁵ | | 14. CONFIGURATION | |
|-------------------------|------------|--------------|----|----------------|-------|-------------------------|---------------------------------------|----------------------------------|--|-------------------|--------------|
| Blank | Regressed | Blank | 80 | 30 | 3000K | EM | Emergency Battery Backup ³ | HC605WH | Cable kit with 6' cable & 5 wires power feed/cable incl., clear cord and white canopy | Blank | Individual |
| W | Wood Ends | 9 | 90 | 35 | 3500K | | | HC605WHNPF | Cable kit with 6' cable & white canopy, non power feed | -B | Beginner Run |
| M | Metal Seam | | | 40 | 4000K | | | HC612WH | Cable kit with 12' cable & 5 wires power feed/cable incl., clear cord and white canopy | -E | Ender Run |
| | | | | 50 | 5000K | | | HC612WHNPF | Cable kit with 12' cable & white canopy, non power feed | -J | Joiner Run |



JOB NAME:

CAT#:

TYPE:

ACOUSTIC MATERIAL COLOR OPTIONS



07 - White



44 - Ivory



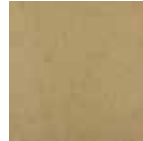
42 - Cream



52 - Latte



02 - Taupe



53 - Smoky
Beige



09 - Deep
Blue



21 - Indigo
Blue



19 - Denim



56 - Azure



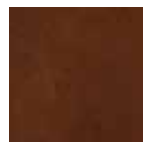
30 - Blue



18 - Arctic Ice



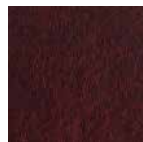
54 - Espresso



49 - Brunette



35 - Speckled
Earth



43 - Lava



36 - Berry



45 - Big Red



55 - Tangerine



41 - Marigold



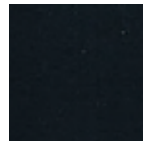
50 - Caramel



51 - Sunkist
Orange



22 - Yellow



10 - True
Black



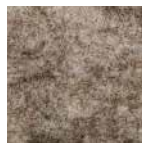
17- Dark
Gray



11 - Steel



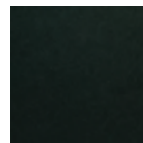
34 - Pure
Gray



06-12-City
Brown



03-12-
Light Gray



47 - Emerald



05 - Dark
Green



12 - Moss



39 - Green
Apple



48 - Avocado



08 - Eggplant

Dimensions and specifications subject to change without notice.

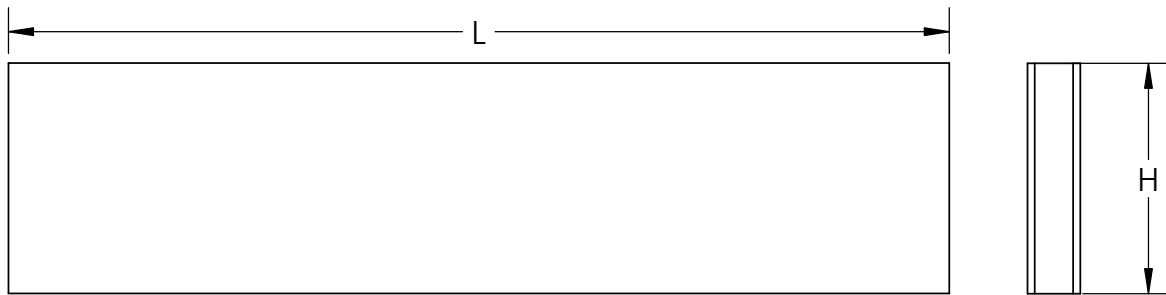


JOB NAME:

CAT#:

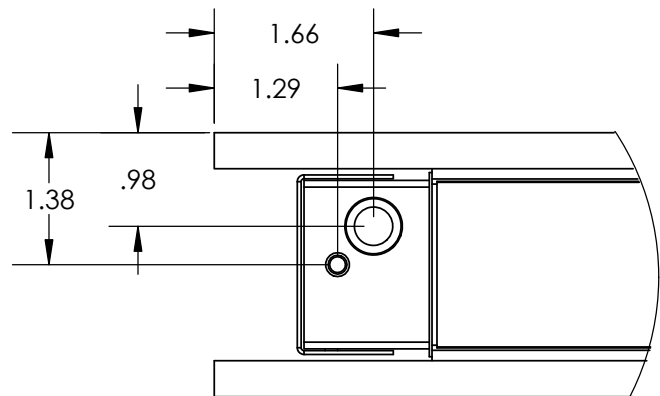
TYPE:

DRAWINGS & IMAGES - Direct and Indirect



| PART | L | W | H |
|---------|--------|-------|-------------|
| ABL3 24 | 24.00" | 2.75" | 12",16",24" |
| ABL3 48 | 48.00" | 2.75" | 12",16",24" |
| ABL3 72 | 72.00" | 2.75" | 12",16",24" |
| ABL3 96 | 96.00" | 2.75" | 12",16",24" |

L-Length
W-Width
H-Height



Dimensions and specifications subject to change without notice.