

Series LAB-CR

LINEAR ACOUSTIC BAFFLE

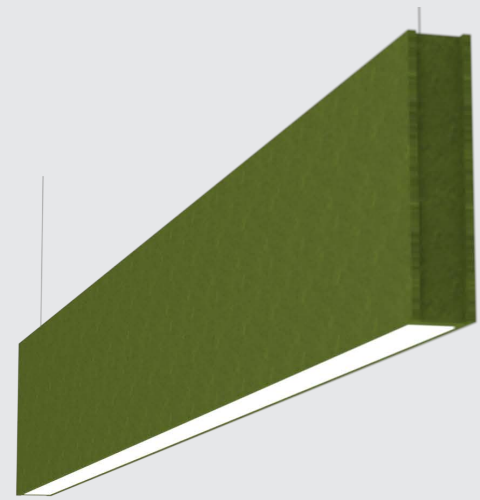
Introducing a new eye catching high efficiency LED light fixture with a narrow acoustic baffle made of sound absorbing material. Class A fire rating option available. It integrates lighting and an acoustic solution into one customizable product. The acoustic material helps create a beautiful and highly functional acoustic baffled ceiling installation. It can be combined with unlit baffles or it can be used as a stand-alone acoustic fixture. Offering multiple colors for different applications or mixing colors to create a dynamic look. Pair LED light fixture with acoustic baffles in the same or complimentary colors. Available multiple lengths from 2ft up to 8ft in length and various heights from 12" to 24".

CONSTRUCTION

Acoustic material is 100% polyester containing at least 40% recycled plastic bottles(PET). Class B fire rating and moisture resistant. Noise Reduction Coefficient (NRC) average around 0.75. Fixture housing is die-formed and welded 22-gauge cold rolled steel. Housing is specially designed for direct or indirect lighting.

MOUNTING

Pendant mount with air craft cable kit options from 12" to 20' long.



DIMENSIONS

24L - 24"L x 3"W
48L - 48"L x 3"W
72L - 72"L x 3"W
96L - 96"L x 3"W

Height Options

12" / 16" / 24"

SPECIFICATIONS

- Narrow Sound Absorbing Material
- Multiple lengths from 2ft up to 8ft length
- Various panel height from 12" to 24"
- Functional as stand-alone light fixture or as part of matching acoustic baffle
- Mix and match with acoustic baffle in different colors to create a dynamic look
- Snap-in frosted acrylic lens
- Easy installation
- Life >50,000 hours
- Constant Current 0-10 Volt dimmable 120-277V
- CRI >80
- Suitable for dry and damp locations

ORDERING INFORMATION-Direct or Indirect Only

SERIES	LENGTH	X	HEIGHT	GEAR	DIRECT/INDIRECT	WATTAGE & LUMENS		DRIVER	CCT						
LAB Linear Acoustic Baffle	24	24.00"	12	12.00"	LT	D	Down Light	12W	12 Watts 1320 Lumens	DMV G120	0-10V dimming Triac or ELV dimming at 120V only	30K	3000K		
			16	16.00"				U	Up Light					24W	24Watts 2640 Lumens
			24	24.00"		40K	4000K								
	48	48.00"	Consult for other height options			24W	24 Watts 2640 Lumens	48K	4800K						
			48W	48 Watts 5280 Lumens											
			36W	36 Watts 3960 Lumens											
	72	72.00"				72W	72 Watts 7920 Lumens	50K	5000K						
			96W	96 Watts 10560 Lumens											
	96	96.00"				52W	52 Watts 5720 Lumens								
			96W	96 Watts 10560 Lumens											
-----*															

FLAIR A		FLAIR B		CONFIGURATION		OPTIONS		
A52	Latte	Blank	Regressed	-B	Beginner Run	HC801WH	Cable kit with 6' cable & 5 wire power feed/cable incl., clear cord and white canopy (included power feed and non-power feed)	
A50	Caramel	W	Wood Ends	-E	Ender Run			
A43	Lava	M	Metal Seam	-J	Joiner			
							HC801WHNPF	Cable kit with 6' cable & white canopy, non power feed (non-power feed only)

Note:
 *Programmable LED drivers allow custom configured wattages and corresponding lumens.
 ** Stock color. See color chart for more options.
 ***Mix Lit and Unlit Baffles. To order simply provide Series, Length, Height, Color and Mounting.
 We reserve the right to change design, materials, LED's and finish in any way that will not alter installed appearance or reduce function and performance.

ORDERING INFORMATION-Direct and Indirect

SERIES	LENGTH	HEIGHT	GEAR	WATTAGE & LUMENS		DRIVER		CCT		FLAIR A																						
LAB** Light Acoustical Baffle	24	24.00"	12	12.00"	LT	Up and Down	U6D12	Uplight 6 Watts Downlight 12 Watts 1980 Lumens	DMV	0-10V dimming	30K	3000K	A52	Latte																		
			16	16.00"											G120	Triac or ELV dimming at 120V only	35K	3500K	A50	Caramel												
			24	24.00"																	U9D18	Uplight 9 Watts Downlight 18 Watts 2970 Lumens	40K	4000K	A43	Lava						
			Consult for other height options																								U12D24	Uplight 12 Watts Downlight 24 Watts 3960 Lumens	50K	5000K		
	48	48.00"																														
				U18D36	Uplight 18 Watts Downlight 36 Watts 5940 Lumens																											
72	72.00"									U27D54	Uplight 27 Watts Downlight 54 Watts 8910 Lumens																					
																U24D48	Uplight 24 Watts Downlight 48 Watts 7920 Lumens															
																						U36D72	Uplight 36 Watts Downlight 72 Watts 11880 Lumens									
96	96.00"																															

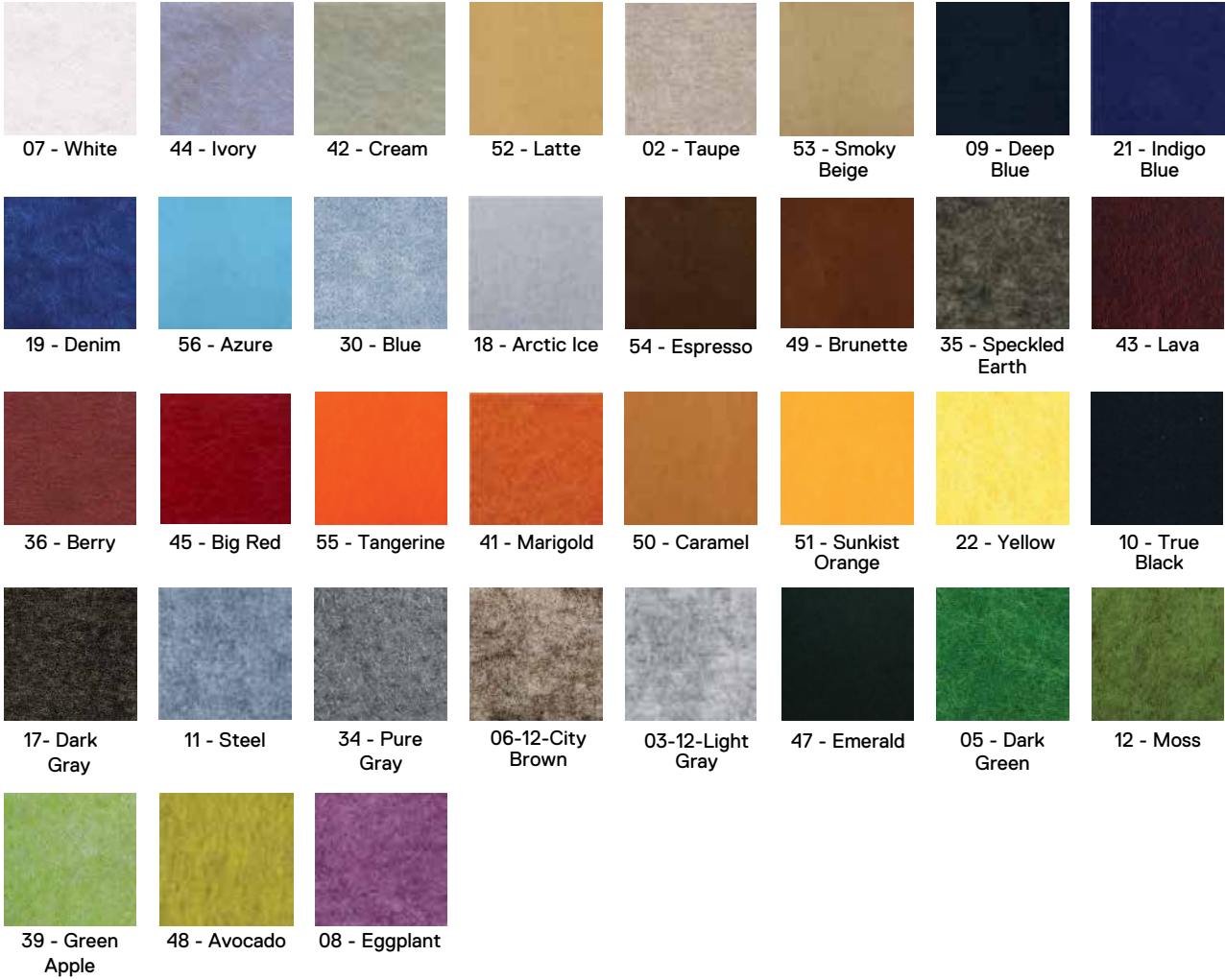
FLAIR B		CONFIGURATION		MATERIAL CLASS		OPTIONS						
Blank	Regressed	-B	Beginner Run	Blank	Class B	HC801WH	Cable kit with 6' cable & 5 wire power feed/cable incl., clear cord and white canopy (included power feed and non-power feed)					
W	Wood Ends	-E	Ender Run	A	Class A	HC801WHNPF	Cable kit with 6' cable & white canopy, non power feed (non-power feed only)					
M	Metal Seam	-J	Joiner									

ORDERING INFORMATION-Unlit Baffle

SERIES	LENGTH	X	HEIGHT	FLAIR A		FLAIR B		CONFIGURATION		MATERIAL CLASS		OPTIONS		
LAB Linear Acoustic Baffle	24	24.00"	12	12.00"	A52	Latte	Blank	Regressed	B	Beginner	Blank	Class B	HC801WHNPF	Cable kit with 6' cable & white canopy, non power feed
	48	48.00"	16	16.00"	A50	Caramel	W	Wood Ends	E	Ender	A	Class A		
	72	72.00"	24	24.00"	A43	Lava	M	Metal Seam	J	Joiner				
	96	96.00"												

Note:
*Programmable LED drivers allow custom configured wattages and corresponding lumens.
We reserve the right to change design, materials, LED's and finish in any way that will not alter installed appearance or reduce function and performance.

ACOUSTIC MATERIAL COLOR OPTIONS



END OPTIONS



Wood End (W)

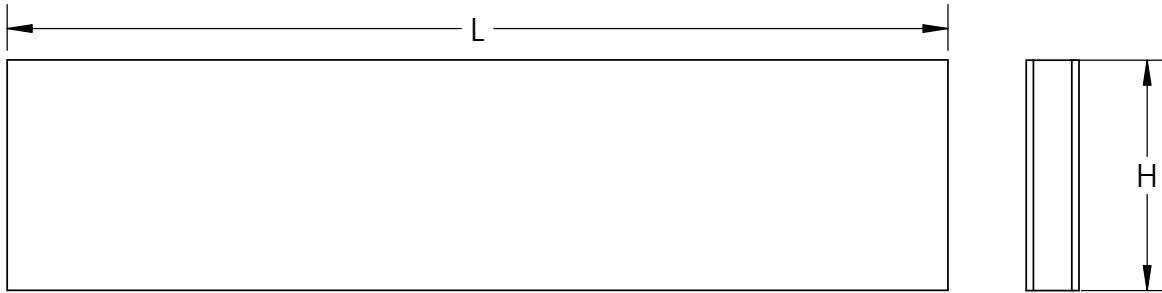
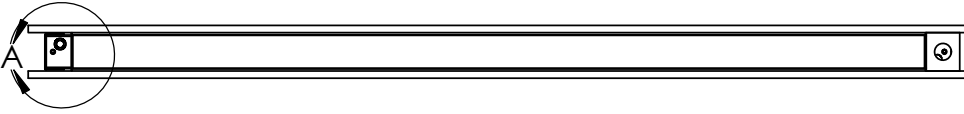


Metal Seam (M)



Regressed (Standard)

DRAWINGS & IMAGES



PART	L	W	H
LAB24	24.00"	2.75"	12",16",24"
LAB48	48.00"	2.75"	12",16",24"
LAB72	72.00"	2.75"	12",16",24"
LAB96	96.00"	2.75"	12",16",24"

L-Length
W-Width
H-Height

